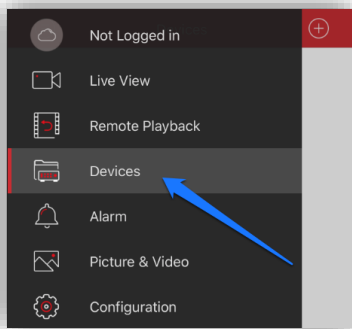


# Phone Install Instructions for Hikvision NVR

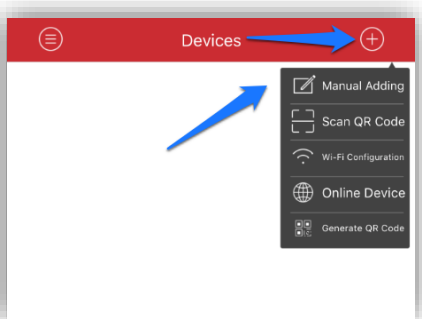
- Download the IVMS-4500/lite App from the Google Play Store or App Store.
- Open the App and tap the Menu icon:



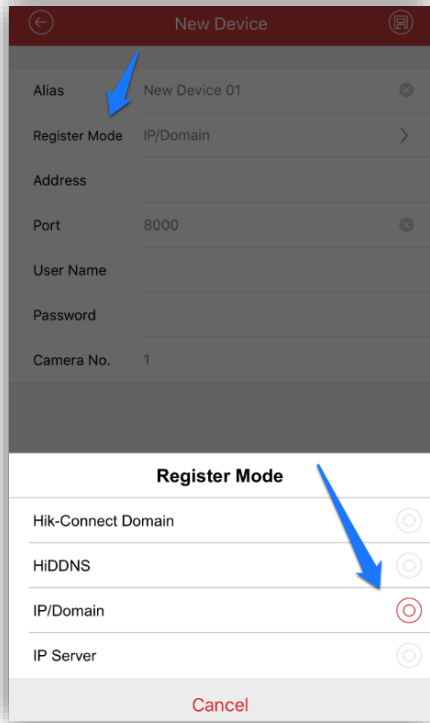
- Tap Devices:



- Tap the Add icon in the upper right and choose Manual Adding:

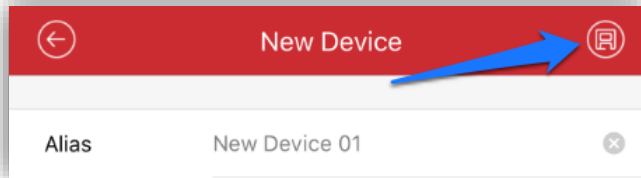


- Enter an Alias (example NV1) for your NVR then tap and select IP/Domain from Register Mode:



- The Address for your NVR is: **hik-(provided by Crime Alert).dvrdns.org**
- Port: **9000**
- Username: **user**
- Password: **user8068**
- Ignore the Camera No. 1 field

- Tap the Save button:



- After the confirmation you can now tap Start Live View to view your Cameras. Congratulations you have completed the IVMS-4500 App set up!

