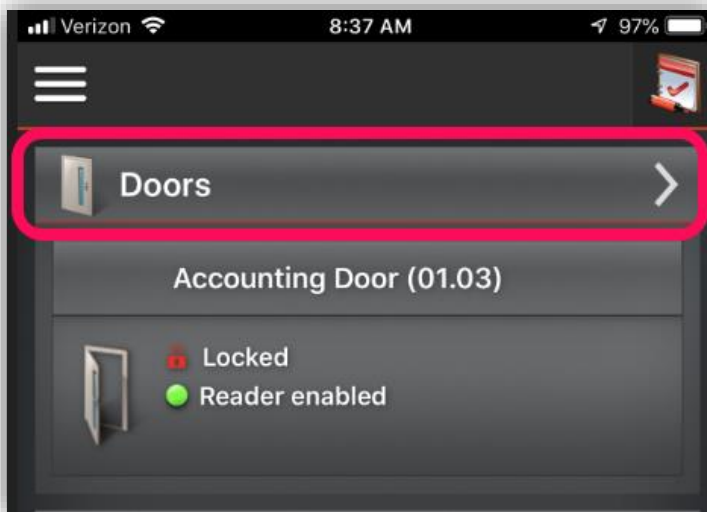


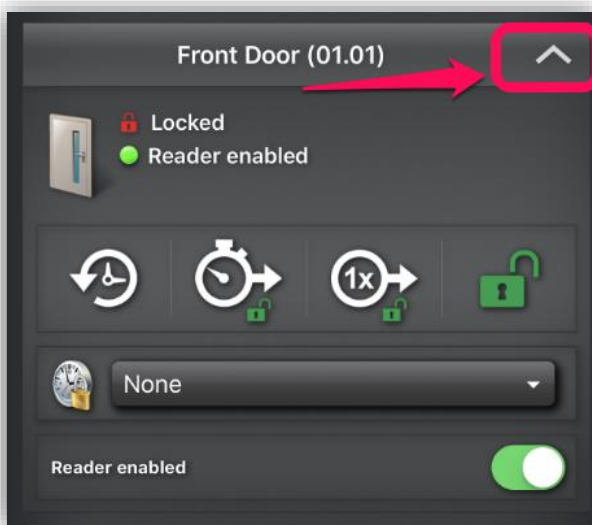
Unlocking a Door in Entrapass GO

The following document covers how to unlock a door from the Entrapass Go mobile app, as well as the key for the icon options you have when selecting a door.

- Open the Entrapass Go app
- Choose the Doors option from the homepage:



- Click the arrow for the door of your choice. This will expand giving you more options for that door:



- This is the **Unlock Icon**. This will unlock the door for the rest of day. The door will stay unlocked till the start of the next schedule day (Midnight):




- This is the **Timed Temporary Unlock** icon. Situations may arise were you need to leave a door unlocked for a designated time. Choosing this icon will bring up a time selector to choose how long you would like to leave the door unlocked:



0	:	29	:	
1	:	30	:	0
2		31		1
3		32		2
4		33		3
5		34		4
6		35		5
7		36		6

Hr Min Sec



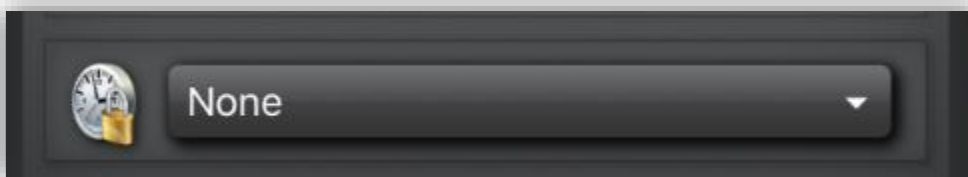
- The **Temporary Unlock** icon when selected will unlock the door for a few seconds allowing entry:



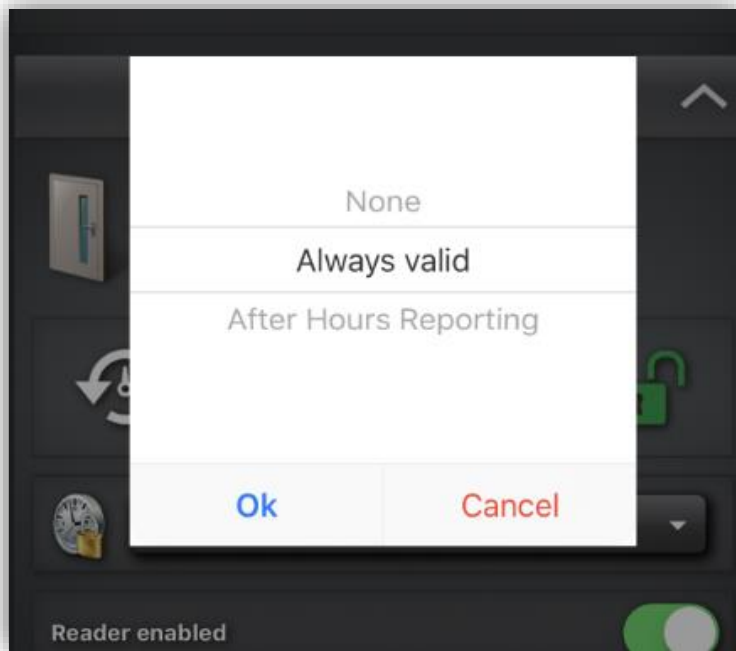
- When any of the unlock options are initiated, you will receive a visual conformation showing the door is unlocked, and now the option to lock the door is available:



- Lastly, if you have created a schedule for a door, you can assign it by selecting the schedule selector dropdown:



- Then choose the schedule from the list:



- If you need further assistance, please contact the Crime Alert Security Office (916-489-8068).