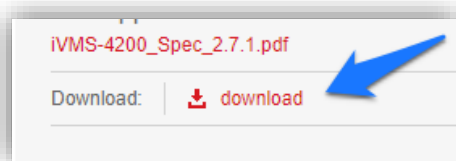
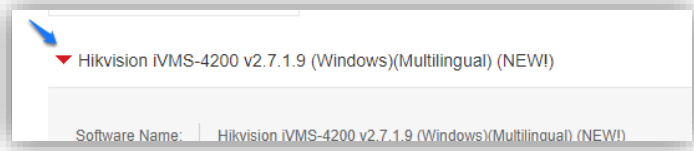
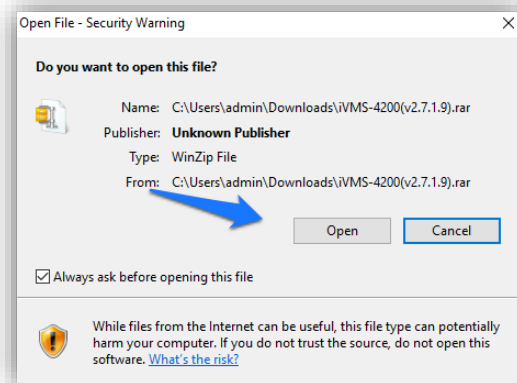
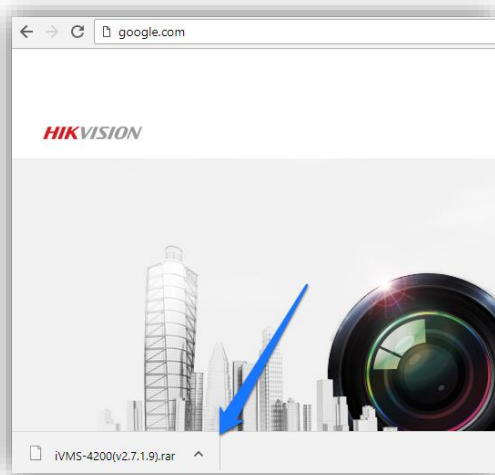


Installation Instructions for Hikvision NVR

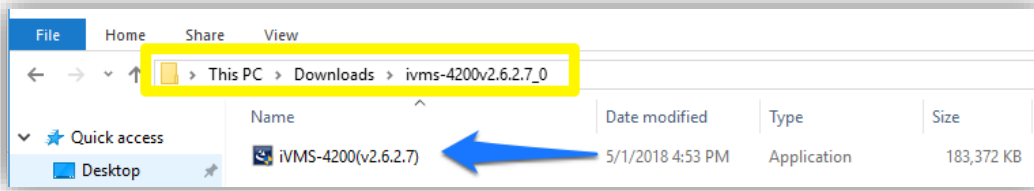
- Visit the Webpage: <https://www.hikvision.com/en/Support/Downloads/Client-Software>
- Choose the latest version of the IVMS Software for windows:



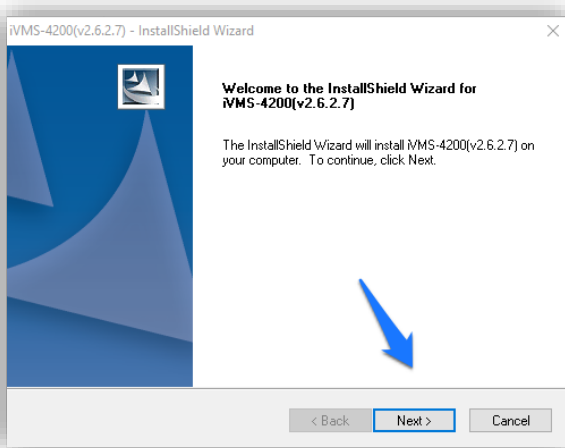
- Agree to the License Agreement and download the file. The file may be a .rar file and you may need a Utility program like WinZip, when you click to open the file:



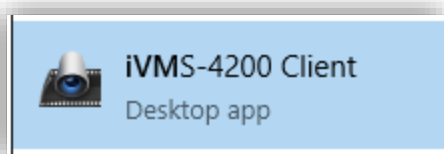
- After Unzipping the files, open your file Explorer and In the Downloads Folder (Or the destination you chose the file to be downloaded to) Open the IVMS Folder and run(Double Click) the IVMS-4200.exe file:



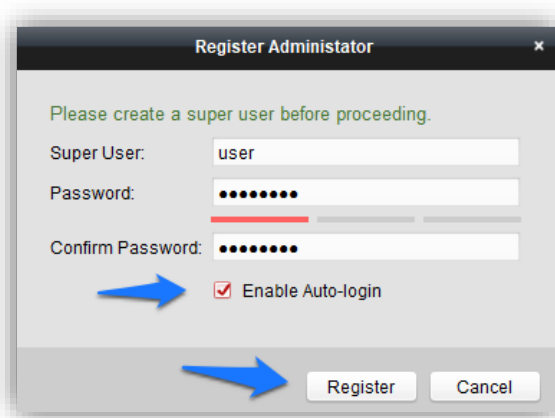
- You may get a Security Prompt asking if you want to choose this app to make changes to your device. Click Yes.
- Install the software, choosing the default options (The Storage Server or Stream Media Server are not needed):



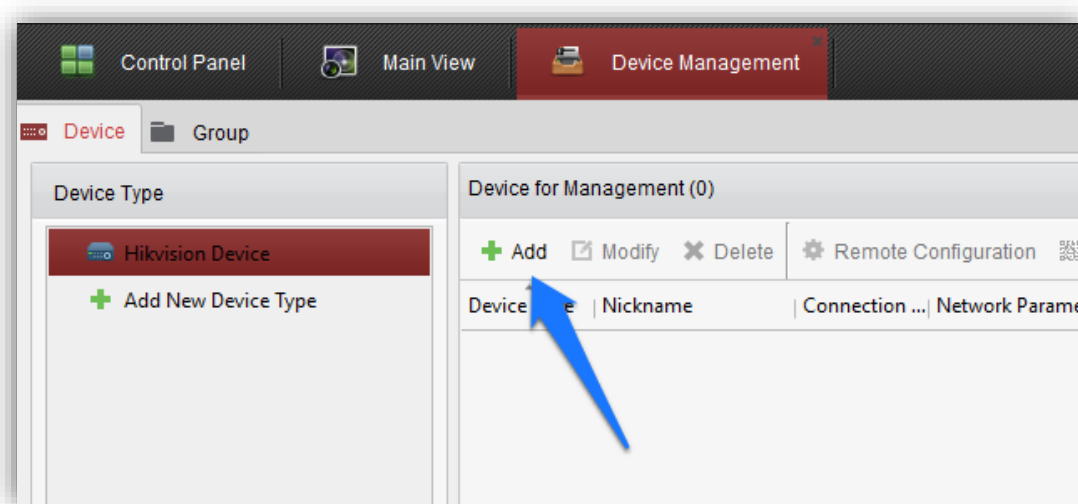
- If the program doesn't open, click on the IVMS-4200 Client Icon to open the program:



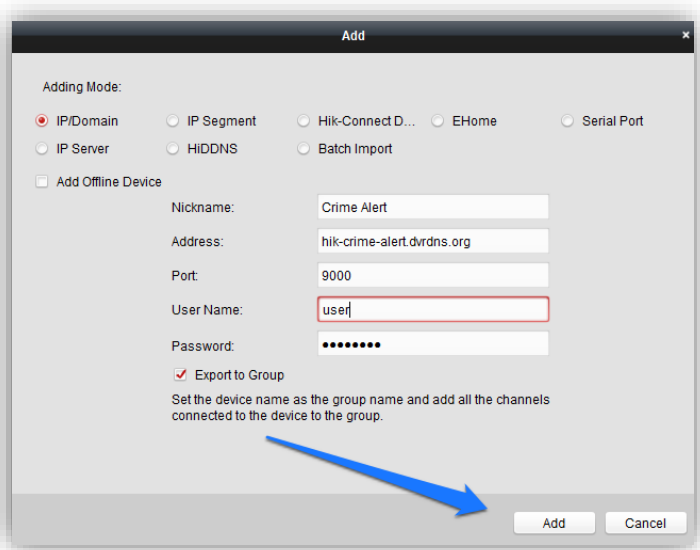
- Upon opening the program (You may be prompted with another security prompt from your computer) you will be prompted to create a super user.



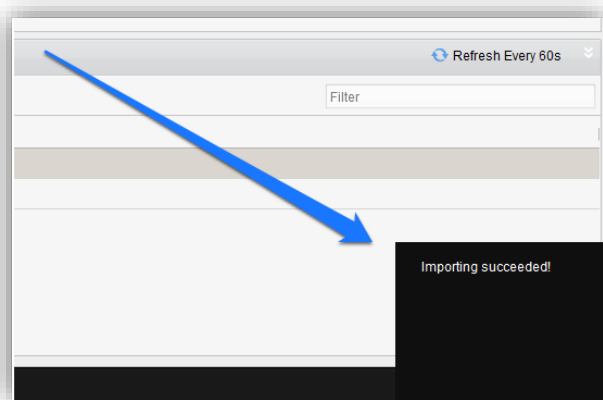
- Enter the following credentials:
- **Super User:** user
- **Password:** user2808
- Check the **Enable Auto-Login** and click Register
- A wizard will pop up, click out the wizard to dismiss it.
- Click Add Under Device Management



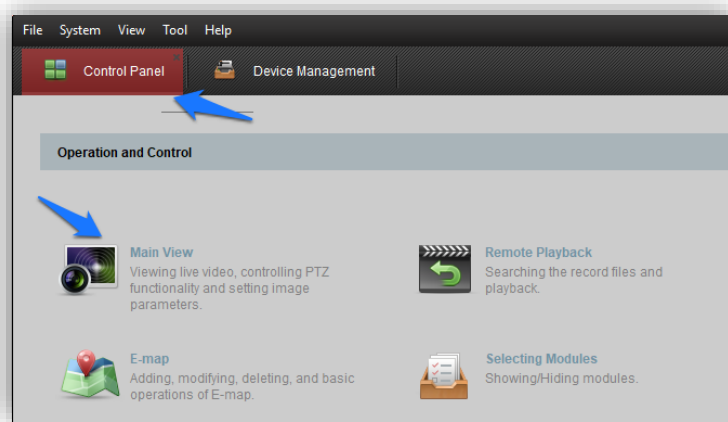
- Give the NVR a **Nickname**(example DVR 1).
- **Address:** hik-(provided by crime alert).dvr dns.org
- **Port:** 9000
- **User Name:** user
- **Password:** user8068
- Click Add



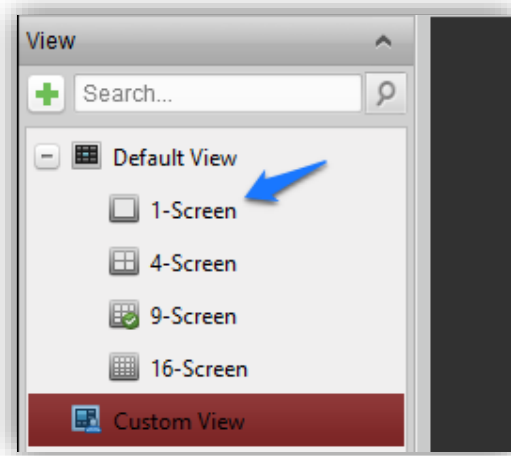
- A notification indicating the import succeeded will be in the lower right of the screen:



- Click the Control Panel then Main View



- Choose the view for your Cameras:



- Expand the folder and double click the Camera you would like to view. Additionally, cameras can be dragged and dropped onto unused windows. Congratulations you have completed the set up!

