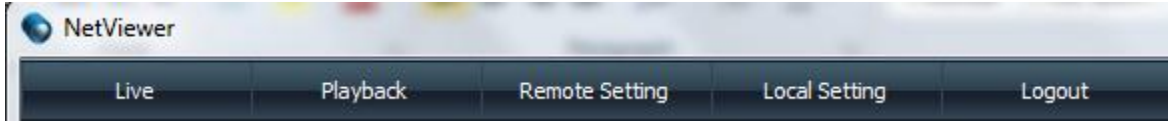
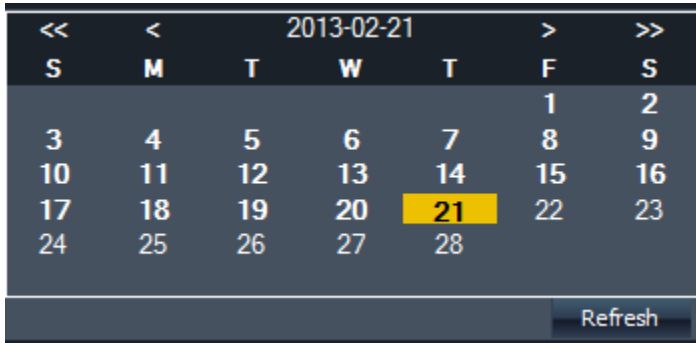


How to View Playback on Bolide H-series DVR:

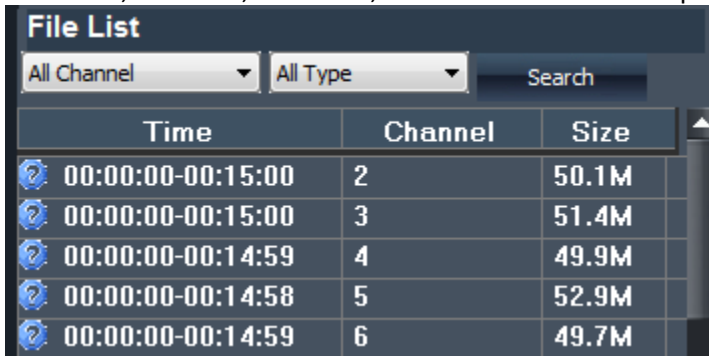
1. Login to the DVR
2. Click on the Playback tab at the top of the screen.



3. Click on the Refresh button under the calendar. The dates that you have recorded footage should turn **bold**.



4. Select the date that you want to look at on the calendar and the File List should show you the start time, end time, channel #, and size of each video clip.



5. Double Click on a video clip and it will start playing in the window on the left.