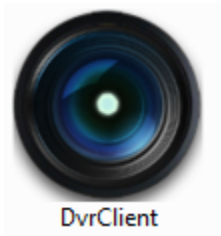
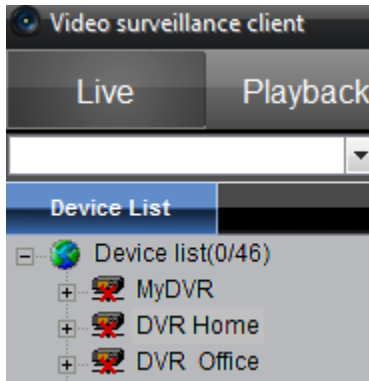


Instructions to Play Back Cameras:

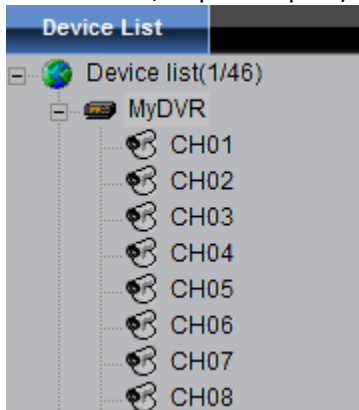
1. Open DvrClient



2. On the left side of the screen find the "Device List"

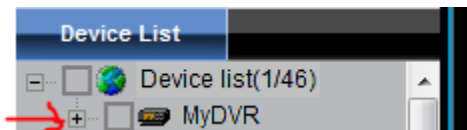


3. Right-Click on the "Name" of your DVR, then select "Login" (If you are already logged into your DVR, skip to step #4)

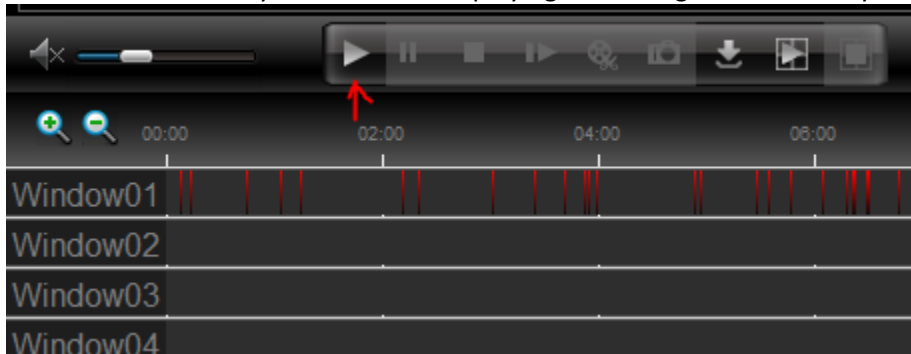


The icon by the "Name" of your DVR should change to the icon above.

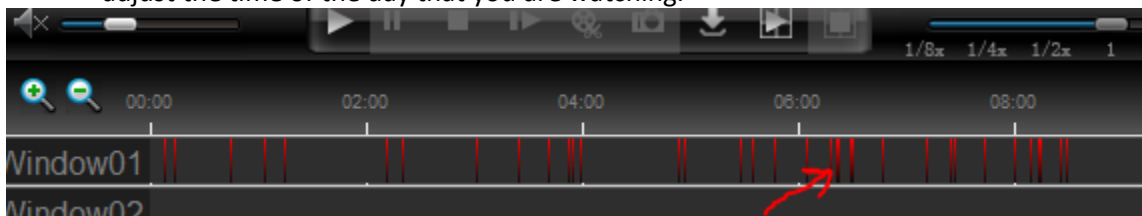
4. Click the Playback Tab at the top of your screen.
5. Click the + next to the "Name" of your DVR, the camera channels should drop down.



- Put a check mark in the box next to the channel that you want to watch (we recommend that you only select 1 channel).
- Select a day from the calendar in the lower left corner of the screen.
- Click the “Search” button below the calendar.
- Click the “Play” button to start playing the footage from that day.



- You can now click on any of the red or green segments along the bottom of your screen to adjust the time of the day that you are watching.



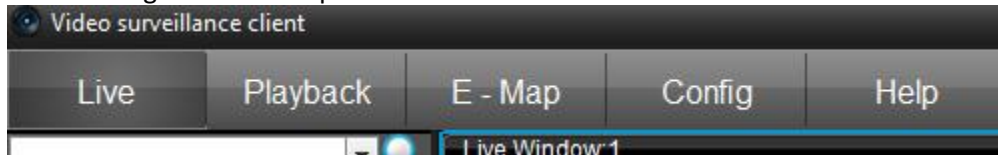
- To change date or camera, repeat steps 6 through 10.

Save Path Setup:

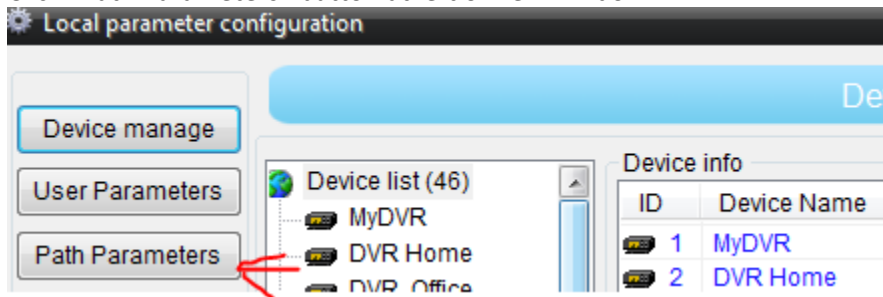
(You will only need to do this the 1<sup>st</sup> time you download footage, if you have already done this, skip the the Downloading Instructions on page 2)

1. Create a New Folder on your computer to save the files in. (for example: right-click on the desktop and create a new folder called "DVR")

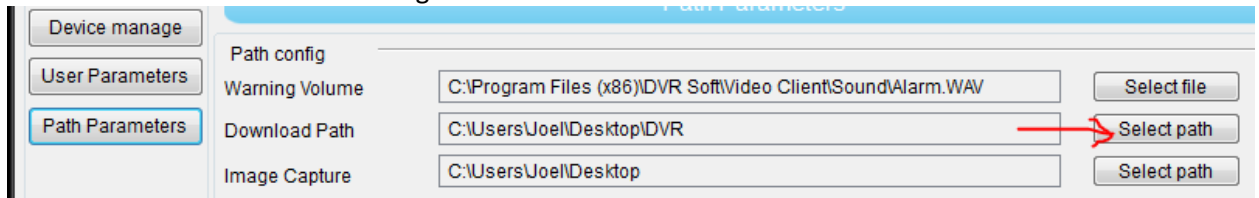
2. Click "Config" button at top of screen.



3. Click "Path Parameters" button at left of new window.



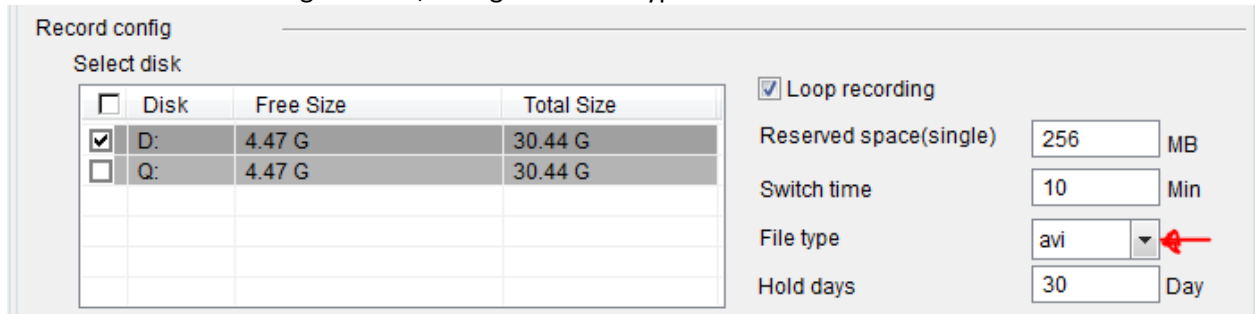
4. Click "Select Path" button to the right of "Download Path"



Select the folder that you created in step 1 in the new window.

5. Click "Select Path" button to the right of "Image Capture"  
Select the folder that you created in step 1 in the new window.

6. Under the "Record Config" section, change the "File Type" to AVI



7. Click "Save" and close the window.

### Downloading Instructions:

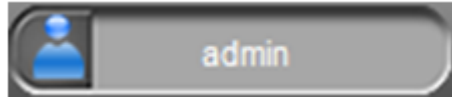
1. From the playback screen, find the clip that you need to download.
2. Make a note of the time and camera number for the event.



3. Click the download button near the bottom of the screen.
4. A new window will appear listing the date, start time, and end time of the video clips for that day and camera.
5. Check the box next to the event time that you need to download.
6. Click the “Start Download” button.
7. A progress percentage should appear next to the video clip showing that it is downloading.
8. Once it is finished, the file should be saved in the folder you created in the “Save Path Setup, step 1” in an AVI format.
9. You can now transfer this file to a cd or usb drive or you can email it depending on the size of the file.

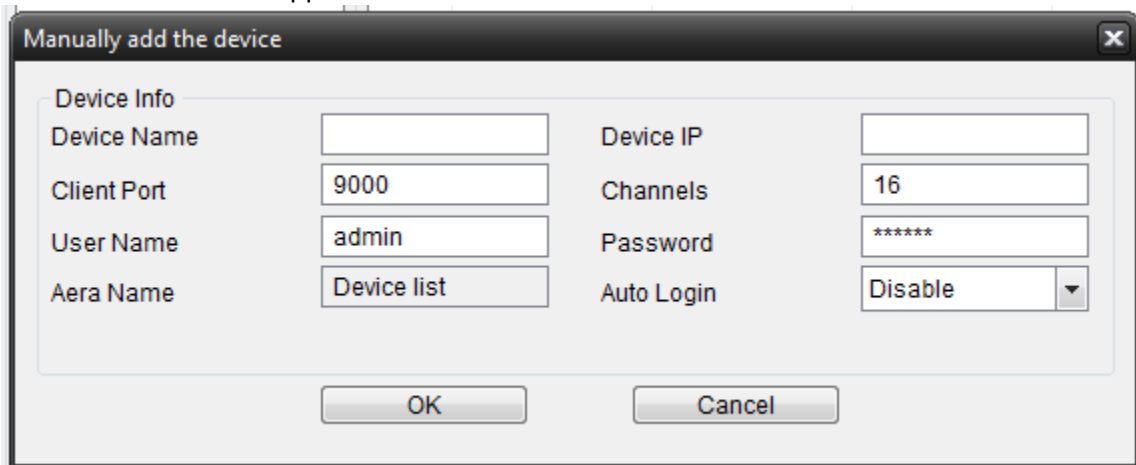
Software Setup: Bolide9000 D

1. Download software from [http://bolideco.com/Library/Software/SVR9000D\\_Client\\_V1\\_25.zip](http://bolideco.com/Library/Software/SVR9000D_Client_V1_25.zip)
2. Install "Video Client"  
Username & Password can be anything  
Recommended: admin/1234



3. On 1<sup>st</sup> Login, click  
Type in Password and check box to enable auto login
4. Click "Config" button at top of screen. A new window should appear.
5. Click "Device manage" button at left side of the new window.
6. Click the "Add" button at the middle of the window.

This screen should appear:



Manually add the device			
Device Name	<input type="text"/>	Device IP	<input type="text"/>
Client Port	<input type="text" value="9000"/>	Channels	<input type="text" value="16"/>
User Name	<input type="text" value="admin"/>	Password	<input type="text" value="*****"/>
Aera Name	<input type="text" value="Device list"/>	Auto Login	<input type="text" value="Disable"/>
<input type="button" value="OK"/>		<input type="button" value="Cancel"/>	

7. Enter information for "Device Name", "Device IP", "Client Port", "User Name", and "Password"  
Device Name: (MyDVR or Your Name or Business Name)  
Device IP: (Provided to you by Crime Alert)  
Client Port: (Provided to you by Crime Alert)  
Channels: 16  
User Name: admin  
Password: 1234

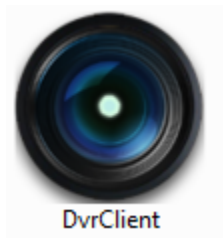
Click "OK," then exit the "Config" window.

8. Your DVR will now be available for viewing; it should be on the left window under "Device List," please refer to the "Viewing Live Cameras" document for further instructions.

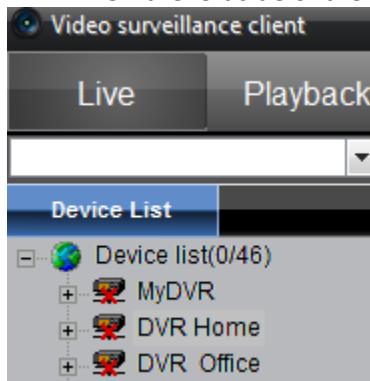


Instructions to View Live Cameras:

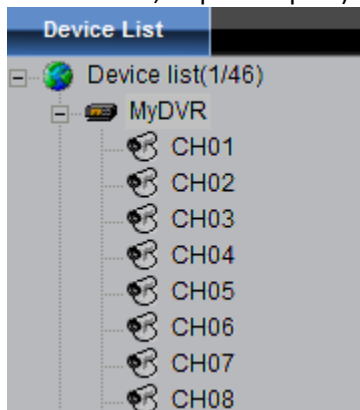
1. Open DvrClient



2. On the left side of the screen find the "Device List"



3. Right-Click on the "Name" of your DVR, then select "Login" (If you are already logged into your DVR, skip to step #4)



The icon by the "Name" of your DVR should change to the icon above.

4. Right-Click on the "Name" of your DVR, then select "Open All Channels" ( you should now see video in the 4 windows in the middle of your screen)

5. If you want to change the number of screens that you see, click the “Split Screen” icon in the lower right corner of your software, then select the screen configuration that you want.

